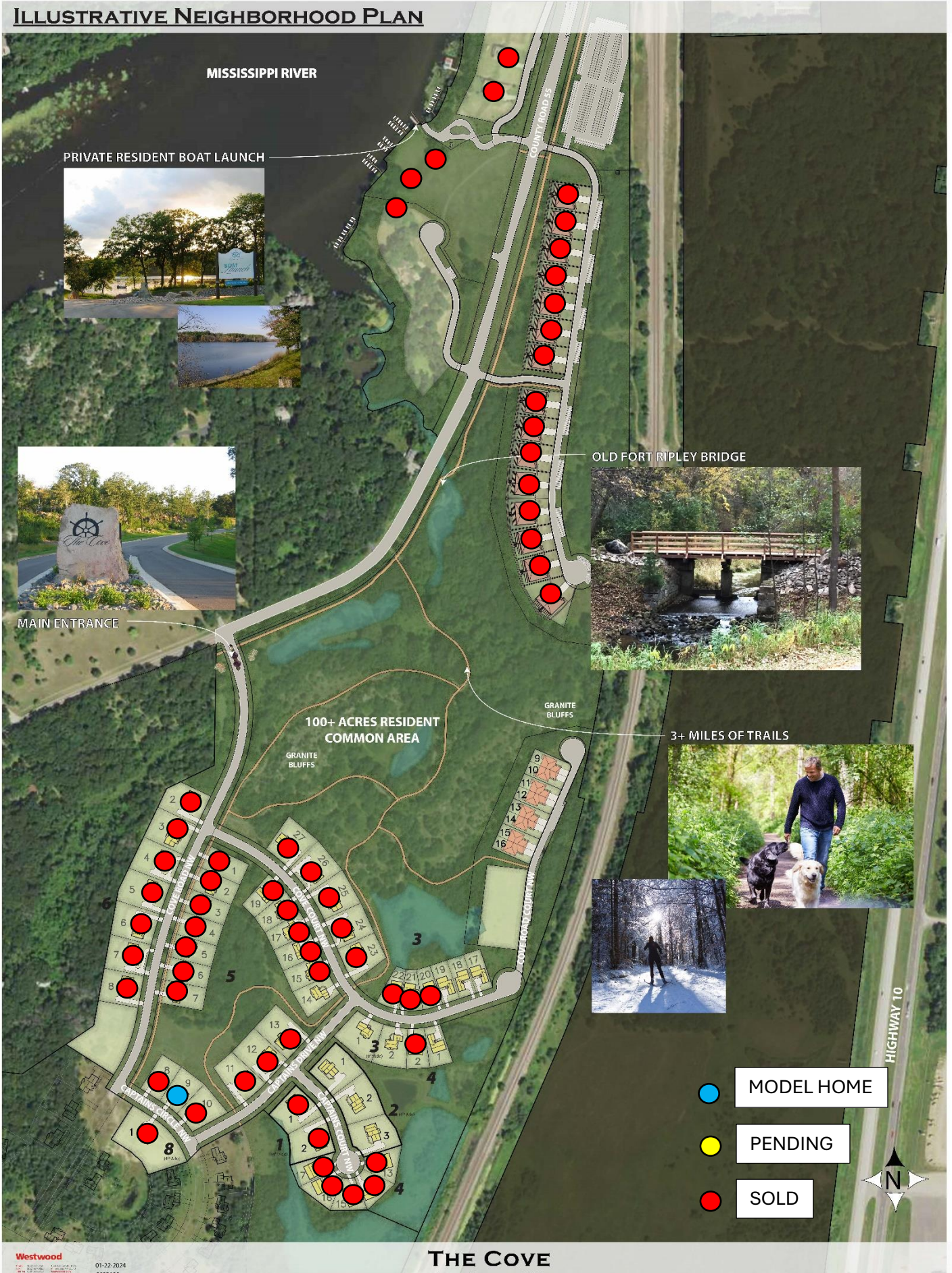


ILLUSTRATIVE NEIGHBORHOOD PLAN



MISSISSIPPI RIVER

PRIVATE RESIDENT BOAT LAUNCH



MAIN ENTRANCE

100+ ACRES RESIDENT COMMON AREA

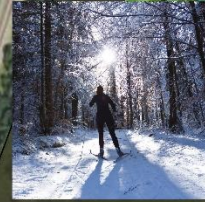
GRANITE BLUFFS

GRANITE BLUFFS

OLD FORT RIPLEY BRIDGE



3+ MILES OF TRAILS



HIGHWAY 10

MODEL HOME

PENDING

SOLD

